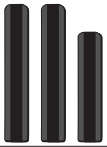


PARTS

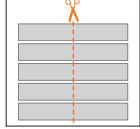
TO ITEM 1.
SILICON VELCRO STRAPS FOR
FITTING
MUDGUARDS IN THE FRONT



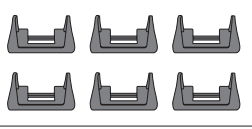
TO ITEM 2.
ELASTIC RUBBER STRAPS FOR
FITTING
MUDGUARD IN THE REAR



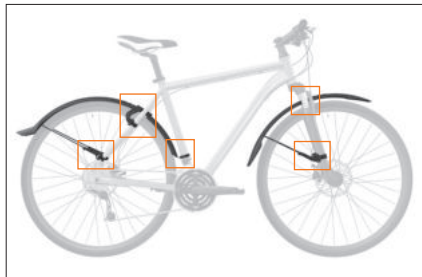
FRAME PROTECTION FOIL



RUBBER INLAY

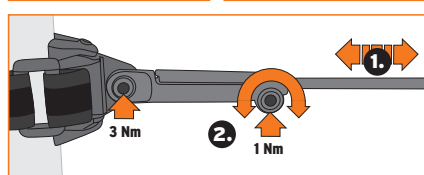
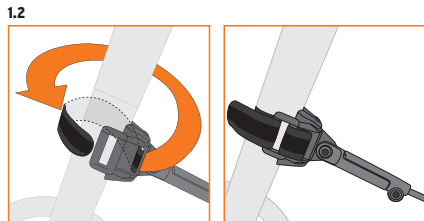
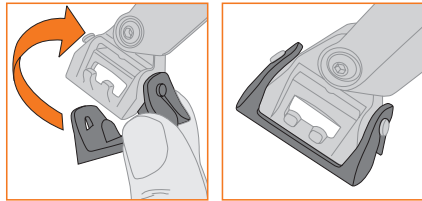


SEATPOST



1. FENDER-ASSEMBLING FRONT

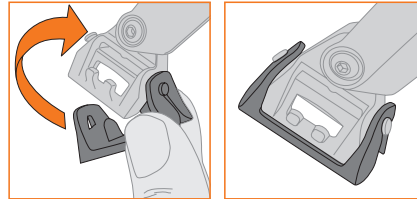
1.1 PREPARATION: MOUNTING RUBBER INLAY



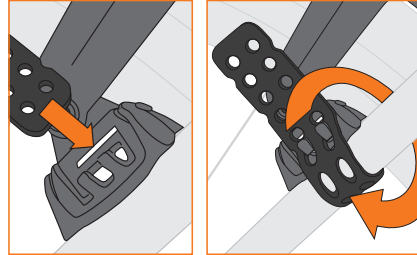
2. FENDER-ASSEMBLING REAR



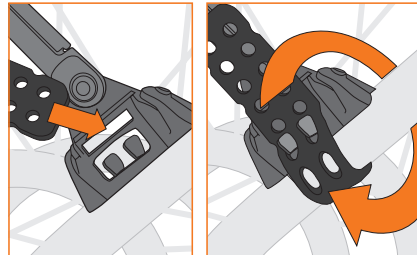
2.1 PREPARATION: MOUNTING RUBBER INLAY



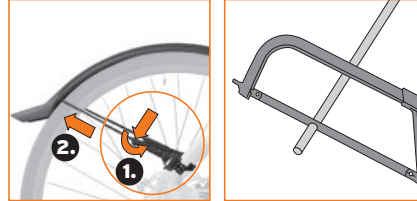
2.3



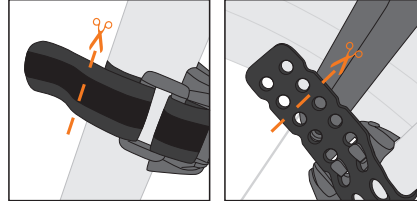
2.4



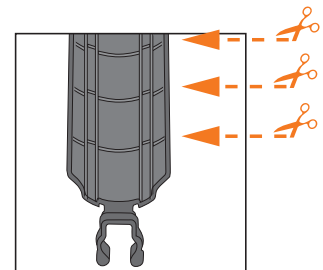
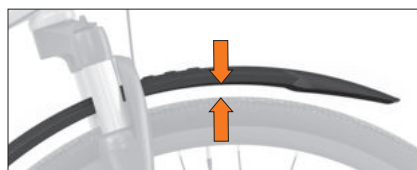
3. CUT STAYS



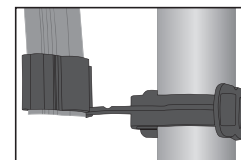
OPTIONAL



ATTENTION!
KEEP THE MINIMUM DISTANCE OF 15 MM BETWEEN
FENDER AND TYRE.



CUTTING LINES *



FRAMECLIP *

* ONLY SUITABLE FOR VELO 65 SERIES